

# GREAT DANE CLUB OF CALIFORNIA



July-August 2012  
Volume 18, Issue 4

[Http://www.gdcc.org](http://www.gdcc.org)

[Http://www.cafepress.com/gdcc](http://www.cafepress.com/gdcc)

## BREANNA UYENO & VENDETTA



**BEST  
JUNIOR HANDLER**

**LAKE COUNTY  
KENNEL CLUB OF  
NORTHERN CALIFORNIA**

© 2012

**GCH. PCH I Came To Get Down V Highlander, TT**

**OFFICERS:** (1-Year Term)

President:	Jim Howey
1st Vice President:	Linda Tonnancour
2nd Vice President:	Mindy Donovan-Tandy
Treasurer:	Carole Horton
Recording Secretary:	Cathy Schaefer
Corresponding Secretary:	Vicki Kimbell 732 S. Gilbuck Drive Anaheim, CA 92802 (714) 774-4773 E-mail: jvdanes@sbcglobal.net

**BOARD MEMBERS:**

(2-Year Terms)

Susie Powell (Expiration 2013)	Bruce Powell (Expiration 2012)
Dick Schaefer (Expiration 2013)	Warren Hennagin (Expiration 2012)
Bob Tonnancour (Expiration 2013)	Mal Helman (Expiration 2012)

**DELEGATE TO PARENT CLUB:**

Dick Schaefer

**COMMITTEE CHAIRPERSONS:**

<b>Awards Trophies:</b>	Susan Richards Mindy Donovan-Tandy
<b>Breeder Referral (Club Members Only)</b>	Shari Ziegenbein (805) 238-6034 E-mail: sharizig@charter.net
<b>Bulletin / Web-store:</b>	Mindy Donovan-Tandy
<b>Club Trophies:</b>	Lisa Garrison Janet Lampe
<b>Dane Rescue Referral:</b>	Suzzane Kelleher-Duckett
<b>Education/Betterment of the Breed:</b>	Jackie White
<b>Event Publicity:</b>	Mindy Donovan-Tandy Vicki Kimbell
<b>Futurity:</b>	Penny Twaits
<b>Historian:</b>	Hilary McLeod Jim Howey
<b>Membership:</b>	Cathy Schaefer
<b>Puppy Match:</b>	Linda Tonnancour
<b>Raffle &amp; Silent Auction:</b>	Susie & Bruce Powell
<b>Show Banquet:</b>	Susie Powell
<b>Show Facilities:</b>	Bruce Powell
<b>Specialty:</b>	Bruce Powell
<b>Ways &amp; Means:</b>	Susie Powell
<b>Watchdog:</b>	Pat Schempp
<b>Web-site:</b>	Jerry Tandy jerrytandy@earthlink.net

**2012 GDCC Meeting Calendar**

September 22, 2012 (Saturday)	General Open Meeting Santa Ana Valley KC (After Dane Judging) Location: Cerritos, CA
November 7, 2012 (Wednesday)	General Closed Meeting & Board Meeting Location: The Hamlet, Pasadena, CA Time: 7:00pm
December 29, 2012	General Open Meeting/Awards & Christmas Dinner Location: Pomona Mining Company, Pomona, CA Time: TBD

**Bulletin Advertising Ads**

Showcase your dog in the bulletin and support the club!

Payment for ads are as follows:

	<u>Member</u>	<u>Non-Member</u>
<b>Front Cover</b>	\$35.00	\$45.00
<b>Full Page</b>	\$25.00	\$35.00
<b>Half Page</b>	\$20.00	\$30.00

It's on a first-come-first-serve basis excluding previous reservation commitments. If you would like to include your ad in upcoming issues, please contact Mindy at MLDT@earthlink.net or (909) 628-8289 to submit your reservation!

**Directions to September General Open Meeting  
Saturday, September 22, 2012 — After Great Dane Judging  
Santa Ana Valley Kennel Club (Richard Gahr High School)  
11111 Artesia Blvd - Cerritos, CA  
Dane Judging Starts at 12:15pm at Ring 7  
\*\* Actual Meeting Location To Be Decided at Ringside\*\***

This meeting is **open** to guests.

**From Orange County:** Take "I-5 North" to "CA-91 West". Exit Pioneer Blvd. Turn left on Pioneer Blvd. Turn right on Artesia Blvd. High School is on the right.

**From Los Angeles:** Take "Hwy 101-South" to "I-5 South" to "I-605 South" to "CA-91 East". Exit Pioneer Blvd., Turn right on Pioneer Blvd. Turn right on Artesia Blvd. High School is on the right.

**From Riverside:** Take "CA-91 West". Exit Pioneer Blvd. Turn left on Pioneer Blvd. Turn right on Artesia Blvd. High School is on the right.

**Note:** Please remember to verify these directions yourself. They are from the internet and may not be accurate for your location.

**Note:** The Great Dane Club of California recognizes that individual members may support any Great Dane Rescue efforts they choose; however, the Great Dane Club of California as a Club endorses the Great Dane Club of America's Rescue Programs.



# THE PREZ SEZ.....

Before I write this article I want to point out first and foremost that the GDCC offers a referral service only for Great Dane rescue, championed by Suzzane Keller-Duckett who does a wonderful JOB representing our club with these efforts. On another note, I'd like to extend a warm thank you to the on-going generous efforts of folks who consistently assist our referral rescue facilities with dog food and other dog related supplies for the health and well being of these animals. Also, I'd like to say that our club assisted with a food donation of almost 1,000 pounds of dog food this month and delivered it to the rescue referral facilities. If any of our members know of or would like to assist in donating food or other items for rescue on an on-going basis, please contact me and I'll send a truck to pick up and deliver these goods anywhere here in the Southland. It is always comforting to know that our fur kids, wherever they may be, go to bed with full bellies because in the morning, they give us "steamy presents" so a shovel is a good tool to have on hand.

Again, thank you to all that have assisted in the rescue efforts for our fur kids, as you are all the renowned "unsung" heroes that need to be celebrated.

*Jim Howey*



## *Cover Story*

Junior Handler, Breanna Uyeno, is 13 years old and has handled many breeds in her young career:

Bullmastiffs, Golden Retrievers, Pugs, Brittanys, Beagles, Soft-Coated Wheaten Terriers to name a few, and of course, Great Danes.

Breanna & Vendetta started their show career together at the GDCA National 201, when Breanna won Best Junior Handler in show. Since then Breanna & Vendetta continue to show in Juniors together and later entered the Breed ring with Vendetta as a Special. Their partnership in the ring is a sight to behold.

Breanna's accomplishments this year include:

- ◆ Currently ranked the # 2 Great Dane Junior Handler Nationwide
- ◆ Invitation to the AKC Eukanuba Invitational 2012
- ◆ Qualified for Westminster 2013
- ◆ Moved up into the Master's class for Juniors
- ◆ Handled Vendetta to her Grand Championship

## Membership Applications

The following applicants will be voted on at the November 2012 Closed Meeting. If you are a sponsor, you need to attend this meeting. At least one of the sponsors will need to speak on behalf of these applicants.

**Final Publication:** **Darlene Andrews**  
Sponsors: Maren Cornish  
Natalie Andrews

**Second Publication:** **Eric Gross**  
Sponsors: James Howey  
Maryann Wilson

**Second Publication:** **Anthony & Michelle Cacace**  
Sponsors: James Howey  
Maryann Wilson

**Second Publication:** **Rickey & Lorrie Burnham**  
Sponsors: Maren Cornish  
Cathy Schaefer

**Second Publication:** **Robin Blackburn**  
Sponsors: Doety Marks  
Shari Ziegenbein

**First Publication:** **Robert G. Payne**  
Sponsors: Norri Hennagin  
Jimet Achiu

## Update Your Membership Roster

Please take a look at your most recent membership roster. A few typos & updates were found. Many thanks to those that let us know!

### **Shari Ziegenbein**

Please contact bulletin editor for info.

## GDCC Awards & Deadlines

There are two important deadlines to keep in mind for this year's Award Nominations. Please note them down, so you don't miss them! The sooner you apply for your award(s) the better!

**November 4, 2012:** You may only apply for awards that have been earned on or before this date.

**November 11, 2012:** Please notify Susan Richards by this date (6:00pm) for any and all awards that you are eligible for during this past year.

For your convenience, the GDCC Award Rules have been included in this bulletin and will be posted shortly on the club web-site at: [http://gdcc.org/awards\\_rules.html](http://gdcc.org/awards_rules.html) .

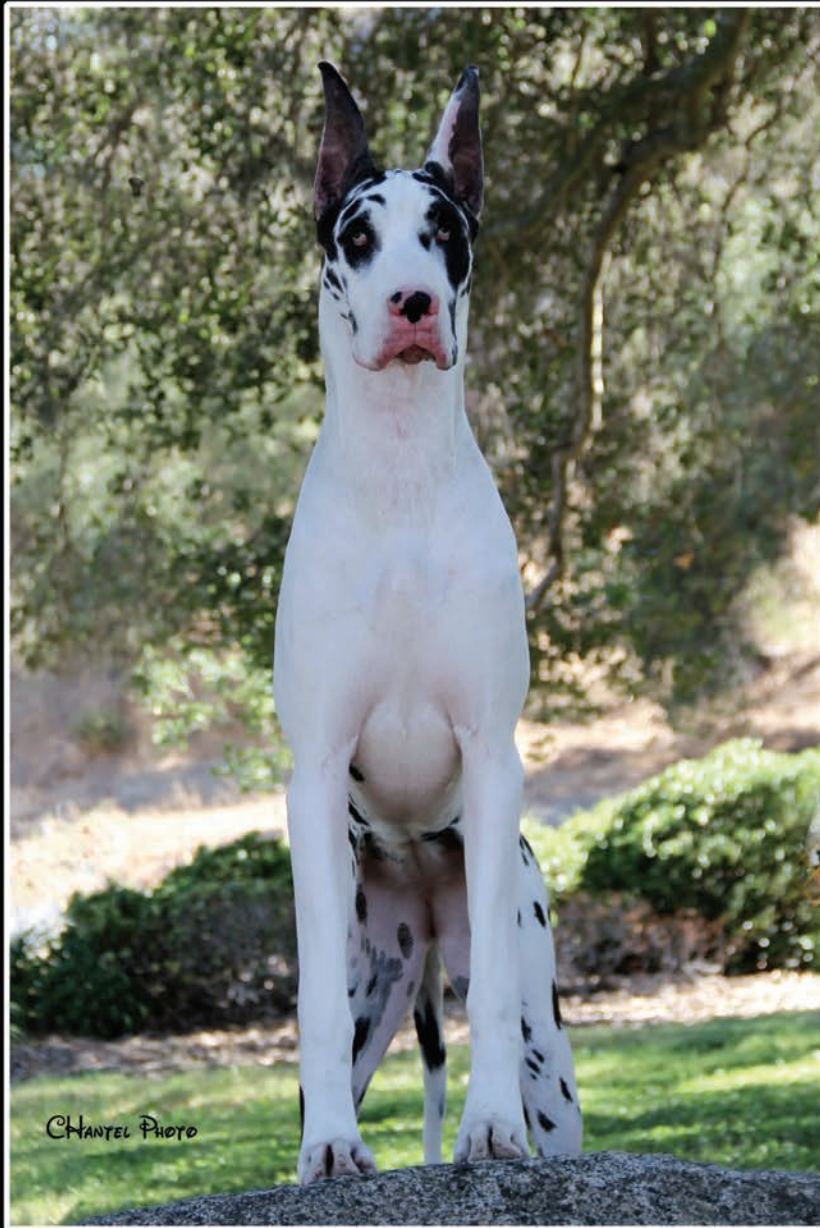
## Nominations for GDCC 2013 Match Judge

Please find a form in this issue to nominate our 2013 Match Judge. Members must be in good standing to nominate. Voting for the Match Judge will take place at the November Closed Meeting. Please contact Vicki Kimbell with your choices by November 6, 2012.

### Nomination Committee

Four (4) nominees plus an alternate will be nominated at the September General Meeting which will complete the Nominating Committee. The Committee will meet prior to the November 7th Board Meeting to select the 2012-13 slate/nominees for Officers and Board of Directors. The requirements for selection for the Nominating Committee and Officers/Director are per Article VI. See list of member attendance eligibility in this issue.

# CHARM ..... PREPARE TO BE SPELLBOUND



CH Twinoaks Chief of Saff, CD RN x GCH Ink Spots Fashionably Late

## INK SPOT'S LOVE POTION No. 9

Charm went WB BOW and Best Owner Handler in Breed at the Cabrillo Kennel Club, Sunday Sept. 2 2012 under judge Arley D. Hussin and went on to take a group 4 in the Owner Handler group under judge Ms. Marie Ann Falconer. We are very proud of our baby girl, just 2 days before her first birthday.

Thank you John and Lisa Garrison of Ink Spot's Great Danes for trusting us with this beautiful and sweet girl, we couldn't love her more.

A special thank you to Chantel for the lovely photos.  
Moving shot by Olga, Gadabout photography

Ad Design By  
MDT Publishing



Loved, Adored and Owned by  
Scott and Kristi Sumpter  
and Lisa Garrison





# THE GREAT DANE CLUB OF CALIFORNIA ELIGIBILITY LIST – 2012 AS OF JULY 21, 2012

By Laws Article VI: Nominations and Elections -

All Nominees for office must have attended at least four (4) meetings, one (1) of which must be a closed meeting as a member during the current fiscal year, and have been a member in good standing for at least one year.

The following members meet the above criteria as of 7-21-2012

Maren Cornish	Cathy Schaefer
Glenn Garza	Dick Schaefer
Sandy Garza	Patricia Schempp
Carole Horton	Mindy Donovan-Tandy
James Howey	Bob Tonnancour
Dana Litzinger	Linda Tonnancour
Susan Powell	Maryann Wilson

The following members have attended three or more meetings. At least one more meeting is needed, which must include the November closed meeting:

Jimet Achiu	Bruce Powell
Warren Hennagin	Jerry Tandy
Doety Marks	Jackie White-Vorst
Hilary McLeod	

The following members have attended three meetings, including a closed meeting. One more meeting is needed:

Eleanor Bartman	Mort Evans
Beverly Evans	

The following have attended two meetings, including a closed meeting. At least two more meetings are needed:

Mal Helman	Vicki Kimbell
Rose Hielscher	

The following have attended two meetings. At least two more meetings are needed, which must include the November closed meeting:

Brunson Achiu	Cynthia Neet
Natalie Andrews	John Neet
Joy DeGruccio	Beth Whitcher
Norri Hennagin	Melanie Yellish

If your name is not listed, you have not attended the necessary number of meetings needed, or you have not been a member for a year.

If any Club member has any questions or corrections to this list, please e-mail me at: [dickschaefer@gmail.com](mailto:dickschaefer@gmail.com). I will be happy to review the sign-in sheets that I have on file for this year.

*Cathy Schaefer,*  
Recording Secretary

## PLEASE NOTE:

As of this date, July 21, 2012, the GDCC will hold only two more meetings during this eligibility period. The remaining meeting dates are as follows: September 22, 2012 and November 7, 2012. Please check the bulletin for locations.



We want to thank all our friends for their support this year with Riggs. We are very happy to share Riggs' MRI results at the age of 2 years old The Neurologist reports Riggs' MRI to be normal for a Great Dane - giving Riggs the future of living a normal life!

The care and concern we have received over the past year has been overwhelming and we are grateful to be involved with the wonderful people of the Great Dane breed.

Love,

Bruce & Susie Powell & Riggs!

~ *In Loving Memory* ~

*CH. Hauerdanes Pearl of Kinshasa*

*September 19, 1999 - August 9, 2012*



Even at 12 years, she was beautiful and tough as ever and could still stop traffic on her daily walks. Pearl won VETERAN BITCH at GDCSD in 2008 from the 6-8 year-old class and then again in 2009 from the 8-10 year-old class. She's ALWAYS "Still The One".

I cannot gauge my sorrow at her loss by her worth. If I do, there will be no end to it.

*Adios Mi Corazon*

Owned & Loved by Clair Noto

Dear Western Division GDCA Clubs and members,

Earlier this month, Kathy Munyan, our Western Division Treasurer (and newly selected GDCA Treasurer), presented the final financial report for our 2011 National Specialty. You folks do AWESOME work. In a nut shell (and round numbers) \$45,000 total profit. \$22,500 to GDCA, \$2,200 to the Charitable Trust (we are the only Division that does this donation) and \$2,000 to be distributed to each of our 11 Western Division Clubs at the end of the month. From all feedback I have gotten, this was the best National Specialty in peoples memories and it is all due to the tremendous effort and hard work from all of you. As we say in Hawaii, Mahlo Nui loa for all that you did. We put some pretty stiff requirements on all the Division Clubs for participation and you all rose way above the expectations. It was a sincere pleasure to work with all of you.

I am resigning as Chair of the Western Division. Living 2500 miles from the mainland it is just too difficult to keep up the personal contact required to do this job properly. If I was living on the mainland and was attending regional shows on a regular basis it would be a different situation. What is now needed are nominations for a new Division Chair. I know many clubs are a bit dormant during the summer so am looking for a hand over around 1 December. We have some time, as our next National Specialty to host is 2017. The Wigwam would love to have us back and discussions have been initiated with them to get a proposal from them. This being said, there could be a different venue out there waiting for us. Most of the committee chairs have indicated they would serve again. We have great continuity records to pass on. Qualifications require a love of the breed, the ability to organize and DELEGATE and set up a situation for all to have fun. Please give this topic long hard discussion and get back to me through Shari those nominations.

Warmest Alohas and Mahalo

Putt Richards





Great Dane Club of California  
Established in 1931

## Great Dane Club of California Awards

All awards must have been earned during the club awards year with the exception of membership mementoes. **Beginning date for the year 2012 is November 7, 2011 through November 4, 2012. Every club member who is the owner/co-owner or breeder/co-breeder of a dog earning an award must personally apply for the award to the Awards Chairman or no award will be given.** You may elect to send an 8 x 10 show photograph of your dog to the Awards Chairman as well. This photo will be retained by the Historian in the club's records. Photos will *not* be returned. If your dog earned his award BEFORE you became a club member no award will be given.

**SUBMITTAL DEADLINE FOR AWARDS IS NOVEMBER 11, 2012 AT 6:00 P.M.**

**TOP GREAT DANE AWARD:** BOB wins only. 1 point for each great dane entry present. These points are to be won in California shows only. (11/80)

**TOP DOG AWARD:** BOB wins – 1 point for each great dane entry present or BOS wins – 1 point for each DOG entry present. California shows only. (1/92)

**TOP BITCH AWARD:** BOB wins – 1 point for each great dane entry present or BOS win – 1 point for each BITCH entry present. California shows only. (1/92)

*The intention of the last two awards is to honor the most consistently winning club member owned/co-owned great dane dog and bitch in California. Club award boundaries include all of California.*

**TOP BREEDER AWARD:** Awarded annually if earned. Given to club member who is the breeder/co-breeder of the most great danes to attain championship title during the club award year. Minimum of three champions required. (1/01)

**TOP STUD DOG AWARD:** Awarded annually if earned. Given to the club member who is the owner/co-owner of the great dane dog producing the most championship titled danes during the club awards year. Minimum of three champions required. (1/01)

**TOP BROOD BITCH AWARD:** Awarded annually if earned. Given to the club member who is the owner/co-owner of the great dane bitch producing the most championship titled danes during the club awards year. Minimum of three champions required. (1/01)

**BEST IN SHOW OWNER AWARD:** Given to any club member owned/co-owned a great dane winning a BIS at an all breed show anywhere in the world. (1/92)

**BEST IN SHOW BREEDER AWARD:** Given to any club member bred/co-bred great dane winning a BIS at an all breed show anywhere in the world. (1/92)

**CHAMPIONSHIP AWARDS:** Given to all members who own/co-owned a great dane who has attained its AKC championship title.

**OWNER OF SIRE CHAMPIONSHIP AWARDS:** Given to all members who own/co-own a sire of a great dane who has attained its AKC championship title. Member must own/co-own the sire at the time of breeding.

**BREEDER OF CHAMPION AWARDS:** Given to all members who bred/co-bred a great dane who has attained its AKC championship title.

**GRAND CHAMPIONSHIP AWARDS:** Given to all members who own/co-owned a great dane who has attained any one of the levels of the AKC Grand Championship titles (9/12):

**Initial GCH:** 25-99 GCH Points

**Bronze GCH:** 100-199 GCH Points

**Silver GCH:** 200-399 GCH Points

**Gold GCH:** 400-799 GCH Points

**Platinum GCH:** 800+ GCH Points

**OWNER OF SIRE GRAND CHAMPIONSHIP AWARDS:** Given to all members who own/co-own a sire of a great dane who has attained its AKC grand championship title(s). Member must own/co-own the sire at the time of breeding. (9/12)

**BREEDER OF GRAND CHAMPION AWARDS:** Given to all members who bred/co-bred a great dane who has attained its AKC grand championship title(s). (9/12)

**OWNER HANDLER AWARD:** Given to any club member who handled his or her own great dane to all 15 championship points. (1/92)

**BRED BY EXHIBITOR AWARD:** Given to any club member owned/co-owned great dane finished entirely from the Bred By class. (1/92)

**PERFORMANCE:** Given to any club member who owns/co-owns a great dane who has earned a title/degree or certificate which shall include, but not limited to obedience, agility, canine good citizenship, and other service/performance-based activities awarded by certified organizations. (2/05)

**"THE TOTAL PACKAGE" AWARDS - BROOD BITCH & STUD DOG:** In order to reward breeding programs that focus on promoting breed health (physical health as well as temperament), danes eligible for this Award must be AKC Champions of record. The focus of this award is on brood bitches, as we acknowledge that breeding programs are largely controlled by the bitch owners. (9/09)

**BROOD BITCH AWARD -**

**SILVER Star Breeder:** Any 2 recognized health checks on a public database (e.g. OFA, CERF), and any recognized basic temperament certification (e.g. AKC Puppy Star, CGC).

**GOLD Star Breeder:** CHIC certification on OFA database (with all CHIC tests passing), OFA testing for heart (echocardiogram), eyes (CERF), thyroid (MSU), and hips (HD); CGC or other basic temperament certification, and any AKC sanctioned performance title.

**PLATINUM Star Breeder:** A CHIC certification (with all CHIC tests passing), four health checks completed and published in OFA database; Thyroid, Heart and CERF done on an annual basis (or within 12 months of breeding). Any two or more advanced AKC sanctioned temperament and/or performance titles.



**STUD DOG AWARD -**

This award encourages stud dog owners to take responsibility in collaboration with the breeder to promote healthy litters. It is recommended that stud dog owners include the following in their stud contracts:

1. Stud dog owner encouraged to provide proof of passing one or more temperament tests (AKC Puppy Star, TT, CGC, TDI, or any AKC sanctioned performance titles).
2. Stud dog to have a least a CHIC certification (passing all CHIC required tests) and all health tests repeated within 12 months of breeding.
3. Encourage bitch owners to health check offspring that are pet quality as well as show potential.
4. Encourage bitch owners to sell puppies not kept for their own breeding programs on limited registration, which can be lifted upon written acceptance of both breeder and stud dog owner (and based on passing temperament tests and health checks).
5. Encourage bitch owners to provide contact information to stud dog owner for all puppies in litter, so that the stud dog owner can monitor health of offspring.

**KAY KINOSITA AWARD:** Honors a member who has given outstanding service to the club or the breed. Recommendations must be received in writing by the President prior to the November Board meeting.

**OUTSTANDING NEW MEMBER AWARD:** Honors a new club member(s) that has been a member less than one full year for outstanding service to the club. Recommendations are reviewed and approved by the board. Contact Awards Chairman for full details. (11/01)

**VENERABLE GREAT DANE AWARD:** Given to any member owned/co-owned great dane who is 10 years of age or older. Awarded once during the life of the dog. Reasonable proof required.

**MEMBERSHIP MEMENTOES:** Given to any member to recognize 10, 25 and 50 years of club membership. This is an ongoing award and may be applied for at any time once earned. Please provide date of membership. (11/01)

**YOU MUST BE A MEMBER IN GOOD STANDING TO RECEIVE ANY AWARD. (11/80)**

Any club member may elect not to receive plaques for awards earned during the year. In place of said plaques an amount equal to the cost of the plaques will be set aside for donation to a great dane health and/or welfare program or organization of the club's choice. Club members electing this option must inform the Awards Chairman in writing at the time they apply for the awards. The names of the dogs and their awards will still be read aloud at the annual awards dinner. (1/01)

**\*\* You can send your information to:**

Susan Richards  
59-427 Kawowo Place  
Haleiwa, HI 96712

If you have any questions, you may contact Susan Richards at (808) 638-0268 or  
E-mail: [anadanekennel@aol.com](mailto:anadanekennel@aol.com)

Please provide proof of title/award/points earned (AKC certificate or print out) or date of titles. Please send your awards as they are earned if possible.

If you wish to have your awards shipped please include a check in the amount of \$5 per award to cover the cost of shipping. Awards will be shipped within 60 days of Awards Dinner.

**DEADLINE FOR AWARDS IS NOVEMBER 11, 2012 AT 6:00 P.M.**  
**Please read all of the above awards as more than one may apply to an individual dog.**





## GREAT DANE CLUB OF CALIFORNIA

### 2013 Puppy Match(es) Judges Nomination Form

You must be a member in good standing to nominate Judges. There is no limit on the number of judges you can nominate. Voting will take place at the upcoming November 7, 2012 closed meeting.

- Return nominations by November 6, 2012 to: Vicki Kimbell, 732 S. Gilbuck Drive, Anaheim, CA 92802 - or via email: [jvdanes@sbcglobal.net](mailto:jvdanes@sbcglobal.net)

#### MATCH JUDGES

---

- NAME: \_\_\_\_\_

BREEDER JUDGE? (yes or no) \_\_\_\_\_ ALL-ROUNDER? (yes or no) \_\_\_\_\_

IF YOU WISH TO GIVE BACKGROUND INFO, PLEASE DO SO: \_\_\_\_\_

---

- NAME: \_\_\_\_\_

BREEDER JUDGE? (yes or no) \_\_\_\_\_ ALL-ROUNDER? (yes or no) \_\_\_\_\_

IF YOU WISH TO GIVE BACKGROUND INFO, PLEASE DO SO: \_\_\_\_\_

---

- NAME: \_\_\_\_\_

BREEDER JUDGE? (yes or no) \_\_\_\_\_ ALL-ROUNDER? (yes or no) \_\_\_\_\_

IF YOU WISH TO GIVE BACKGROUND INFO, PLEASE DO SO: \_\_\_\_\_

---

- NAME: \_\_\_\_\_

BREEDER JUDGE? (yes or no) \_\_\_\_\_ ALL-ROUNDER? (yes or no) \_\_\_\_\_

IF YOU WISH TO GIVE BACKGROUND INFO, PLEASE DO SO: \_\_\_\_\_

---

- NAME: \_\_\_\_\_

BREEDER JUDGE? (yes or no) \_\_\_\_\_ ALL-ROUNDER? (yes or no) \_\_\_\_\_

IF YOU WISH TO GIVE BACKGROUND INFO, PLEASE DO SO: \_\_\_\_\_

---

## Upcoming Shows

- **Saturday, September 22, Santa Ana Valley Kennel Club,** Richard Gahr High School, 11111 Artesia Blvd, Cerritos, CA  
*Judge: Madeleine Fish*
- **Sunday, September 23, Santa Ana Valley Kennel Club,** Richard Gahr High School, 11111 Artesia Blvd, Cerritos, CA  
*Judge: Lee Whittier*
- **Saturday, September 29, Bonanza KC of Carson City,** Fuji Park, Hwy 395-Clear Creek Road, Carson City, NV  
*Judge: Michelle Billings*
- **Saturday, September 29, AZ White Mountain Kennel Club,** Show Low High School, 1200 N. Cougar Ln, Show Low, AZ  
*Judge: Luis Sosa*
- **Sunday, September 30, AZ White Mountain Kennel Club,** Show Low High School, 1200 N. Cougar Ln, Show Low, AZ  
*Judge: Charles Trotter*
- **Sunday, September 30, Bonanza KC of Carson City,** Fuji Park, Hwy 395-Clear Creek Road, Carson City, NV  
*Judge: Conny Gutierrez-Otero*
- **Saturday, October 13, Black Mountain Kennel Club,** Palace Hotel & Casino, 2411 W. Sahara Avenue, Las Vegas, NV  
*Judge: Roberta Rettick*
- **Sunday, October 14, Black Mountain Kennel Club,** Palace Hotel & Casino, 2411 W. Sahara Avenue, Las Vegas, NV  
*Judge: Loraine Boutwell*
- **Sunday-Saturday, October 21-27, Great Dane Club of America National,** Kansas Expocenter, Topeka, Kansas
- **Saturday, October 27, Kennel Club of Riverside,** Lake Perris Recreation Area, 17801 Lake Perris Drive, Perris, CA  
*Judge: Judi Shurb*
- **Sunday, October 28, Kennel Club of Riverside,** Lake Perris Recreation Area, 17801 Lake Perris Drive, Perris, CA  
*Judge: Judith Daniels*
- **Saturday, November 3, San Gabriel Valley Kennel Club,** Industry Hills Expo Center, 16000 Temple Avenue, City of Industry, CA  
*Judge: Jill Ferrera*
- **Sunday, November 4, San Gabriel Valley Kennel Club,** Industry Hills Expo Center, 16000 Temple Avenue, City of Industry, CA  
*Judge: Joan Luna*
- **Friday, November 16, Tucson Kennel Club,** Pima Co. Fairgrounds, 11300 S. Houghton Rd, Tucson, AZ  
*Judge: Cecilia Ringstrom*
- **Saturday, November 17, San Luis Obispo Kennel Club,** Calif. Mid State Fairgrounds, 2198 Riverside Ave, Paso Robles, CA  
*Judge: Mary Ann Brocius*
- **Saturday, November 17, Tucson Kennel Club,** Pima Co. Fairgrounds, 11300 S. Houghton Rd, Tucson, AZ  
*Judge: Butch MacDonald*
- **Sunday, November 18, San Luis Obispo Kennel Club,** Calif. Mid State Fairgrounds, 2198 Riverside Ave, Paso Robles, CA  
*Judge: Henry Williams*
- **Sunday, November 18, Greater Sierra Vista Kennel Club,** Pima Co. Fairgrounds, 11300 S. Houghton Rd, Tucson, AZ  
*Judge: Jeanne Zuver*
- **Monday, November 19, Greater Sierra Vista Kennel Club,** Pima Co. Fairgrounds, 11300 S. Houghton Rd, Tucson, AZ  
*Judge: Adrian Woodfork*

## Other Announcements!



*Next Bulletin Deadline:  
October 12, 2012*

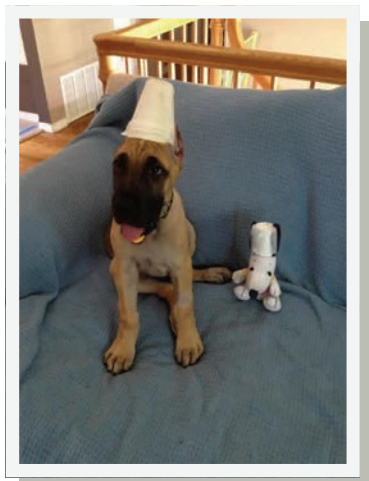


Photo submitted by Peggy Smith-Schilling



### Funny Pics?

If you have a funny picture of your dog (probably doing something they shouldn't be???), send it to the bulletin editor. We're trying to get a collection to use when space is available. Any questions, contact Mindy at [mldt@earthlink.net](mailto:mldt@earthlink.net) or 909.628.8289.

# 3-Point Major Reserves

The AKC delegate body has passed a new rule to allow each parent club nationals speciality to opt in or opt out of awarding a 3-point major to the RWD & RWB. This is predicated on if the entry is twice the number of entries for 5 point major.

This new rule goes into effect on January 1, 2013. Below is the newly approved language -

## **SECTION 1 (new sixth paragraph)**

Each AKC Breed Parent Specialty Club shall have one designated Parent Club National Specialty show per year. All others shall be termed a Parent Club Specialty show. Unless the Parent Club, in its Application to the AKC to hold its National Specialty, chooses to exclude the following award:

At the National Specialty the dog designated Reserve Winners Dog and the bitch designated Reserve Winners Bitch will be awarded a three-point major, provided that the number of dogs competing in the regular classes of the Reserve Winner's sex totals at least twice the number required for a five point major, in the region in which the event is held. No major for Reserve Winners shall be given based upon an award of Best of Winners.

In counting the number of eligible dogs in competition, a dog that is disqualified, or that is dismissed, excused or ordered from the ring by the judge, or from which all awards are withheld, shall not be included.

---

## *Liver Rye Training Treats*

This makes a somewhat dense, cakey treat that's very easy to handle during a training session. Be sure to grind the liver well, to avoid stringy pieces that are hard to cut through. Once you think it's well combined, process it a little bit longer.

1 cup whole wheat flour  
1 cup rye flour  
1 pound (2 cups) beef liver (with juice)  
1/4 olive oil  
3 eggs

- Preheat the oven to 400 F
- In a large bowl, combine the flours. Puree the liver in the food processor. Once liquefied, add olive and eggs and continue processing until well combined. Pour the liver mixture into the dry mixture and mix with a spoon into a sticky batter. Pour onto a baking sheet covered with greased or non-stick foil and spread evenly with a wet spatula or wet hands. Bake for 15 minutes or until the top is firm. Remove from the oven and cool for about a half hour or until cool enough to handle. Then turn the dough over, peel off the foil and cut into small treats. Store in an airtight container in the refrigerator (or you can freeze it).

Add your own touches, i.e. you can use all-purpose flour instead or add some rosemary, garlic powder, Worcester sauce if you like.





# All-Breed Conformation & Agility Fun Match

Saturday, October 6, 2012

Lake Skinner Regional Park - Temecula

More info & entry forms at <http://www.TemeculaKennelClub.org>

Conformation, Agility (all dogs welcome), Handling / Movement Classes, Jr. Showmanship & CGC Testing

Conformation: 3-6, 6-9, 9-12, 12-18 Months, Open & Exhibition Only. (Altered)

Agility: \$8.00 at ringside, unlimited runs. 1 course AM / 1 course PM (Weaves/Tunnels/Jumps)

RARE BREEDS WELCOME - EXPERIENCED JUDGE

Jr. Showmanship: Junior, Intermediate, and Senior (Novice and Open)

Movement: Junior (3-12 months) and Senior (12 months and above)

\*\*\*\*\*

**PRE-ENTRIES CLOSE WEDNESDAY - October 3, 2012**

(Pre-Entries for Conformation & Jr. Showmanship - \$5.00 - CGC Pre-Entries - \$8.00)

\*\*\*\*\*

**DAY OF SHOW ENTRIES 8 AM TO 10 AM SHARP - PLEASE ARRIVE EARLY**

(Conformation - \$10.00 & Jr. Showmanship - \$5.00. CGC Testing 6 Months & Over - \$10.00. Handling/Movement - \$1.00 at Ringside)

\*\*\*\*\*

*Prizes Will Be Offered For Best in Match, Best Junior Showman,  
Best in Junior and Senior Movement & Conformation Group Placements*

\*\*\*\*\*

**CGC EVALUATION STARTS 10:30 AM SHARP. CONFORMATION JUDGING AT 1 PM**

Lake Skinner Parking fees are \$8.00 per car - Park opens at 6 am

SEND PRE-ENTRIES TO: Temecula Kennel Club c/o Jim Howey

PO BOX 163 - Temecula, CA 92593-0163 Phone (951)265-2399

**Please Make Checks Payable To Temecula Kennel Club**

**50/50 TICKET RAFFLE ~ BASKET RAFFLE ~ PRIZES ~ RIBBONS ~ FOOD ~ FUN**

---

## ENTRY FORM

BREED \_\_\_\_\_ SEX \_\_\_\_\_ BIRTHDATE \_\_\_\_\_

CLASS(ES) \_\_\_\_\_

DOG NAME \_\_\_\_\_

OWNER'S NAME \_\_\_\_\_

ADDRESS \_\_\_\_\_

*I(We) agree to hold this club, its members, officers, and agents harmless for any claim for loss or injury which may be alleged to have been caused to any person or thing while upon the match grounds.*

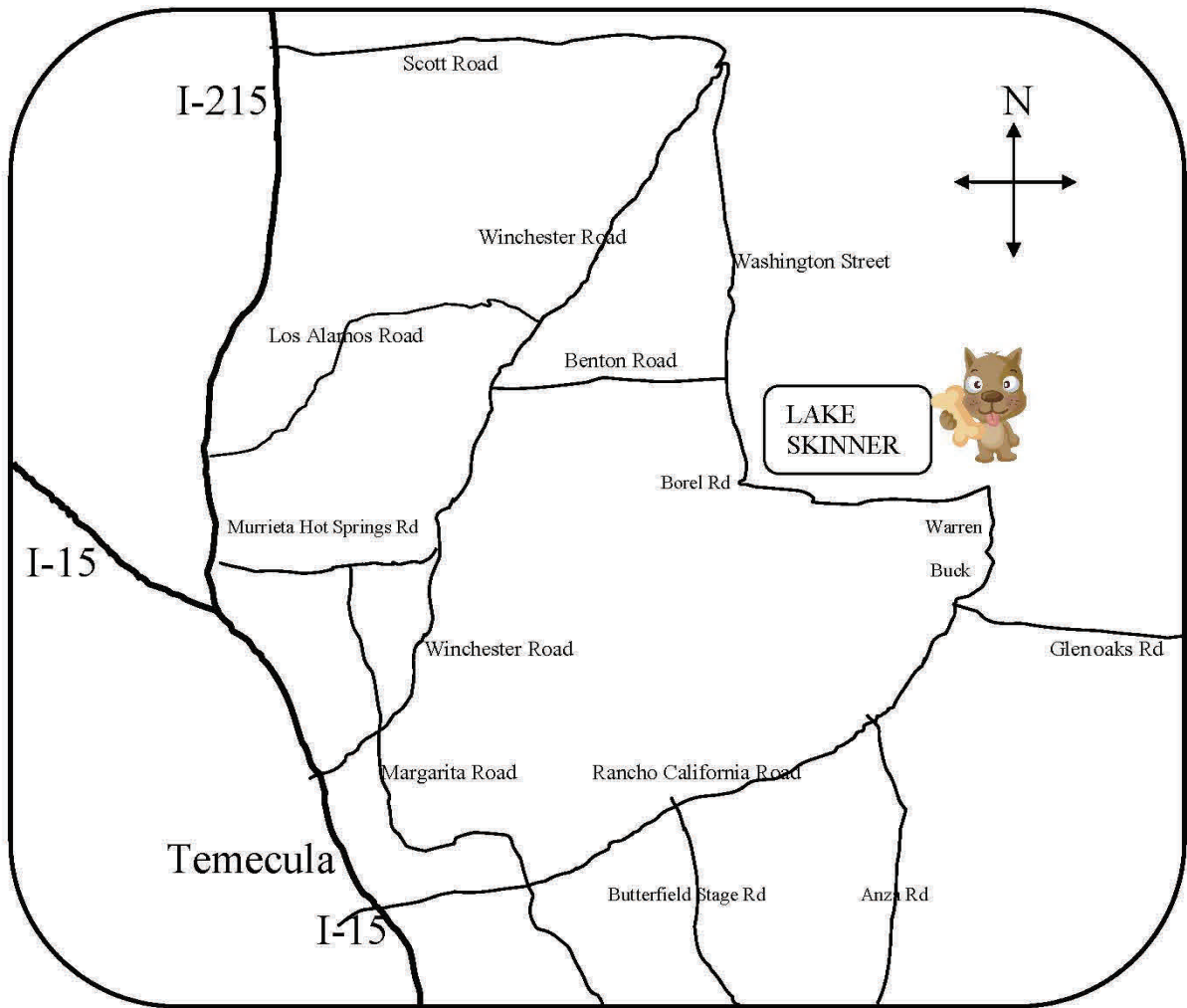
SIGNED \_\_\_\_\_ DATE \_\_\_\_\_

IF YOU WOULD LIKE NOTIFICATION OF FUTURE TKC MATCHES & EVENTS, PLEASE PROVIDE US WITH YOUR

EMAIL ADDRESS \_\_\_\_\_

**(Please come prepared with - ample water, ice, shade, chairs, crates, x-pens, cool coats & show supplies)**

MAP TO LAKE SKINNER



**ALL  
BREED  
FUN  
MATCH**

# ! NEW EYE CERTIFICATION REGISTRY !

For all those who do health testing on their dogs, please read the attached information. Many thanks to Dana Litzinger for sharing this information with our memberships.

---

Dear Parent Club CHIC Liaison:

The OFA is pleased to announce a new Eye Certification Registry (ECR). The new ECR is a joint effort between the OFA and the American College of Veterinary Ophthalmologists (ACVO) and has the full endorsement of the ACVO and their member Diplomates. The addition of eye examination results to the OFA database will unquestionably make the OFA the most complete resource of canine health screening results in the world and enhance this important toolset for responsible breeders to make more informed breeding decisions in an effort to reduce the incidence of inherited disease.

A copy of the official press release is attached.

The new OFA Eye Certification Registry will be available as of November 1, 2012. Transition to this new registry should be seamless for both owners and examining ophthalmologists:

**EXAMS** - There will be no changes to the existing exam protocols. The standard exam process will still be conducted by ACVO Diplomates assessing dogs for the presence or absence of observable hereditary eye disease.

**RESULTS** - There will be no changes to the interpretation or classification of the exam results. Dogs with normal eye exams will receive OFA eye clearance numbers similar to the OFA numbers issued for hips, elbows, cardiac, etc. Dogs with observable, but passing conditions (currently known as Breeder Option Codes), will be issued notated OFA eye clearance numbers. Dogs with observed eye diseases of significance will be reported as ineligible for eye clearance numbers. A complete list of Breeder Option Codes and Ineligible Categories will be available on the OFA website soon.

**FORMS** – All active ACVO Diplomates will receive the new OFA exam forms by mid-October in advance of the transition. The forms will be similar in format to the exam forms currently in use.

**VALID PERIOD** – OFA eye certification numbers will be considered valid for one year from the time of the exam.

**FEES** - Fees for both initial submissions (\$12) and resubmits (\$8) of passing results for eye certifications will remain the same with one change. In order to maximize the benefits to breeders it is important to encourage owners to share all exam data, both normal and non-passing results. To that end, there is no charge to owners to submit non-passing results to the database if they authorize open disclosure.

**ONLINE ACCESS** – All normal/passing eye exam results submitted to the OFA will be available on the OFA's website. Non-passing results will be available on the OFA website if the owner authorizes disclosure.

**AKC** – OFA eye certification numbers will be shared with the AKC for inclusion on their registration and pedigree documents if the dog was permanently identified via microchip or tattoo AND the id was verified by the ophthalmologist at the time of the exam.

**STATISTICAL DATA COLLECTION** – Regardless of whether the owner opts to register eye exam results with the OFA, the examining ophthalmologist will submit the results for statistical purposes to monitor disease prevalence and progression at the breed level. Working with the ACVO Genetics Committee, the OFA will make aggregate statistics available to ACVO Diplomates, breed clubs, and the public.

In addition to the new Eye Certification Registry (ECR), the OFA is working with the ACVO to establish a new Clinical Database of Ophthalmic Diagnoses (CDOD). Recognizing that the ECR represents a biased population of primarily normal dogs, the CDOD will capture additional data regarding disease prevalence for those dogs presenting to private and institutional practices for reasons other than a certification exam. Together, the OFA's new ECR and CDOD will be important tools to monitor canine inherited eye conditions and reduce their incidence.

As a not-for-profit organization, a portion of the proceeds from all OFA eye registrations will be donated to the ACVO Vision for Animals Foundation to support research leading to the elimination of ocular diseases causing vision loss and suffering in animals. In keeping with the OFA's existing policy to support canine health research grants, these donations will be in addition to grants supported through the AKC Canine Health Foundation and the Morris Animal Foundation.

Please refer back to the OFA website (<http://www.offa.org/>) in the coming weeks as more details become available. If your club has any questions in the interim, please contact the OFA's Chief Operating Officer, Eddie Dziuk, at [edziuk@offa.org](mailto:edziuk@offa.org)

Eddie Dziuk  
Chief Operating Officer  
Orthopedic Foundation for Animals  
2300 E Nifong Blvd.  
Columbia, MO 65201  
Phone: (573) 442-0418 x222 Fax: (573) 875-5073  
Email: [edziuk@offa.org](mailto:edziuk@offa.org)  
Website: <http://www.offa.org/>



## **Frequently Asked Questions regarding the new OFA Eye Certification Registry**

### **Is the OFA Eye Certification Registry (ECR) replacing CERF? Is CERF going away?**

The OFA and CERF have always had a collaborative working relationship. However, we are two distinct organizations. The OFA cannot speak for CERF. The American College of Veterinary Ophthalmologists (ACVO) has designated the OFA's Eye Certification Registry as their endorsed registry as of November 1, 2012. ACVO diplomates (veterinary ophthalmologists) will be receiving OFA eye examination forms in mid-October, and the ACVO is encouraging their use and registration of results with the OFA going forward.

### **How will this transition affect those breeds including CERF as one of their CHIC requirements?**

The key element of the requirement is the exam itself, not the organization registering the result. There are no differences in the eye examination protocol whether the intent is to register with CERF or the OFA. The exam protocol and the resulting interpretation and classifications are the same. Prior to the transition date, all CHIC requirements that currently include CERF eye exams will automatically be updated. The new criteria will read, "Eye examination by an ACVO Ophthalmologist with the results registered with either the OFA or CERF". Going forward, both OFA and CERF registrations will meet the CHIC eye exam criteria.

### **Will the OFA continue to display CERF results on their website?**

All public domain data that CERF has previously shared with the OFA will be archived and will continue to be displayed on the OFA website.

### **Is my ophthalmologist aware of the transition?**

The ACVO Board of Regents communicated formally with all active diplomates in early August. The OFA has also communicated with all active diplomates regarding the implementation. Additionally, the new program will be formally rolled out at the Annual ACVO Meeting in October.

### **Are there any differences between the OFA's Eye Certification Registry and CERF?**

For the average dog owner, there are no significant differences. The exam protocol, interpretation of results, and fees are all the same. Eye exam results registered with the OFA will continue to generate certification numbers, and these will be forwarded to the AKC and displayed on the OFA website.

### **Since there are no significant differences in registering results with the OFA or CERF, what are the benefits of one over the other?**

The primary benefits of the new ACVO and OFA joint Eye Certification Registry are on the backend. The OFA has committed to more frequent and enhanced reporting of aggregate statistics regarding disease prevalence and progression by breed. Enhanced reporting will be available for ACVO diplomates and for parent breed clubs. Regularly updated aggregate statistics will be made available to the public via the OFA's website. The OFA is also establishing a Clinical Database of Ophthalmic Diagnoses to capture data from ACVO diplomates on canine eye exams in an institutional or practice setting where the dog is presenting for reasons other than a certification exam. The inclusion of this data will greatly enhance disease monitoring. As a not-for-profit organization, the OFA will be sharing a negotiated percentage of all eye registrations with the ACVO Vision for Animals Foundation to support research leading to the treatment and elimination of ocular disease. Submission of eye exams to the OFA will support all of these efforts and will maximize the value of data in a single central database.

### **CERF exams are currently considered valid for one year. What about the OFA Eye Certification Registry?**

OFA eye certification numbers will also be valid for one year from the time of the exam.

### **If I previously submitted an eye exam to CERF, and submit follow up exam results to the OFA, will the OFA charge the initial or resubmit fee?**

In the above scenario, even though it represents an initial submission to the OFA, if a previous CERF submission on the dog is documented, the reduced resubmit fee (\$8) will be applied.

## **Frequently Asked Questions regarding the new OFA Eye Certification Registry (cont'd)**

### **How should breed clubs that incorporate specific CERF language into their Code of Ethics, Breeder Guidelines, Advertising Requirements, etc handle the transition?**

Neither the OFA nor the ACVO can dictate how clubs handle these types of changes, especially since the changes may be specifically governed by their club Constitution, By-Laws, or Operating Policies. However, since the eye exam is the key element, not the registry, the OFA recommends updating such language in line with the following...”eye examination for observable inherited eye disease by an ACVO diplomate (ophthalmologist) with the results registered with either the OFA or CERF” .

### **Can I submit a CERF exam form to the OFA’s Eye Certification Registry?**

Since the exam data is the same, the OFA will accept submissions recorded on CERF exam forms. However, so the owner’s intent is clear, the OFA will require a signed note from the owner or authorized agent indicating they would like the exam results entered into the OFA Eye Certification Registry, and accompanying payment must be made to the OFA. If a submission includes a check payable to CERF, the application will be returned.

### **How will OFA assign eye certification numbers and how will they differ from CERF?**

The OFA will assign eye certification numbers for dogs found free of observable inherited eye disease. Dogs with observable, but passing conditions (currently known as Breeder Option Codes), will be issued notated OFA eye certification numbers. Dogs with observed eye diseases of significance will be reported as ineligible for eye certification numbers. The OFA eye certification numbers will follow the same format as existing OFA numbers for other disease databases. The following example illustrates the anticipated format: LR-EYE-100/24M/VPI. In this example, the first two characters indicate the breed, in this case a Labrador Retriever. EYE indicates this is an OFA eye number. 100 would indicate this is the 100th Labrador assigned an OFA eye number. These numbers are issued sequentially within breed. 24M indicates the age in months at the time of evaluation, and the sex. VPI indicates that the dog was permanently identified via microchip or tattoo and the examining ophthalmologist verified the id during the examination. Other possible suffixes would include NOPI (no permanent identification provided), or PI (permanent id provided on the application but not verified by the examining ophthalmologist). Only dogs with verified permanent identification will have their normal results automatically shared with the AKC for inclusion on their registration and pedigree documents. Breeder option codes will be noted on the OFA report and on the OFA website.

### **What will be the OFA’s policy regarding posting of eye exam results on the OFA website?**

The OFA will follow its existing policy for posting of exam results. All normal/passing results are considered public domain information and will post and display on the OFA’s website. Dogs with observable, but passing conditions (currently known as Breeder Option Codes) will have their results posted and released into the public domain, including the specific notation. There is no option to keep a passing observable breeder option code condition confidential while releasing the passing certification number. Non-passing results will only be posted and released if the owner authorizes disclosure.

### **Will eye exam clinics continue to be held at dog shows?**

Eye exam clinics are arranged independently by the show giving club and the attending ophthalmologist. There is no reason to believe that these will be discontinued.

Eddie Dziuk  
Chief Operating Officer  
Orthopedic Foundation for Animals  
2300 E Nifong Blvd.  
Columbia, MO 65201  
Phone: (573) 442-0418 x222 Fax: (573) 875-5073  
Email: edziuk@offa.org  
Website: <http://www.offa.org/>

# JUST FOR GIGGLES.....





# Therapy Great Danes

Therapy dogs have to have certain innate temperament traits as well as some good training to succeed. Among the temperament traits necessary are friendliness, gentleness & empathy towards people. Because these traits are very much typical for the Great Dane, this breed makes for a natural therapy dog! Many dedicated teams of Danes with their owners are already out there in the community volunteering & making a difference. Maybe you too would like to share your wonderfully sweet & loving Great Dane with those in need in your town?

Therapy dogs work in all kinds of settings with all sorts of people. Some visit nursing homes, visiting with the elderly. Some go to hospitals and to hospices to visit with the very ill. Some work with children, especially children with disabilities. Some visit our injured soldiers returning from war. Some even work with kids in libraries & schools, helping them to read!

Most of the training skills needed are covered in puppy and basic manners classes. The Canine Good Citizen (CGC) test is the core of most therapy dog tests, which add into that skill set things like familiarization with medical equipment & with those with infirmities. To begin work, the potential therapy dog will typically have to be able to pass every item as listed in this brochure. <http://www.tdi-dog.org/images/TestingBrochure.pdf> The dog must be at least a year old to test. The dog's health also has to be certified by a qualified veterinarian annually.

The handler (owner) will have to have the time & motivation to volunteer regularly in their community and will also have to feel comfortable with the chosen "patient population." Training & grooming have to be maintained. Local therapy dog organizations and specific facilities may impose further requirements.

To learn more about therapy dogs, visit the following websites:  
THERAPY DOGS INTERNATIONAL, INC. <http://www.tdi-dog.org/>  
DELTA SOCIETY <http://www.deltasociety.org/>  
THERAPY DOGS INC <http://www.therapydogs.com/>

**P.S. Many of our GDCC members have successful therapy dogs that do very special work. Most notably, one comes to mind of one member who has spent many years offering her dogs, (Barkley & Sparkly), to actively servicing her community. Just want to give a "high-five" to Sharon Rendall!**



## Danesports

**Agility** - is the fastest growing dog sport today. Competition agility involves running a designated obstacle course in a specified time. As the dog and handler progress they move up to more difficult levels of competition. This is all done off-lead and it requires the dog to have basic obedience as well as be physically fit. For more information on agility visit the AKC Agility FAQ page. Another website of interest is the North American Dog Agility Council. For more information specifically on Danes that do agility visit [here](#).

**Obedience** - is the formal competition of handler and dog as a team. Exercises begin with simple heeling and stay commands and progress to difficult retrieves over jumps and scent article discriminations. The ability to work as a team is put to the test. An updated link to top Obedience Danes will be available soon.

**Tracking** - utilizes the dog's innate sense of smell. The dog is trained to follow the scent of a designated individual and scored on his ability to do so under increasingly difficult circumstances. For more information on agility visit the AKC Tracking FAQ page.

**Weight Pull** - events test the ability of the dog to move hundreds and even thousands of pounds. There are Great Danes who have participated and even titled in weight pull events.

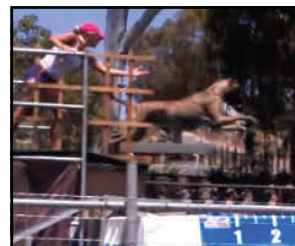
**Fly-Ball** - is a tag-team sport where dogs hurdle towards a box that launches a tennis ball which they must return to the start line. It's fast, furious and a lot of fun. For more information on fly-ball and the Danes that do it click [here](#).

**Free Style** - is currently not a competitive sport in North America but can be seen at dog events even know as exhibition. This is a routine of "dance" moves between handler and dog, set to music, and typically involving costumes. It's becoming more popular every day and is a great way to express your own individuality and the be creative in your training with your dog.

**Therapy** - work is something many Great Danes excel at. This can be as simple as supervised visits to a classroom or nursing home once a month to the dog and his handler working with a team of medical specialists to help facilitate various forms of therapy that is animal-assisted. Therapy dogs must have basic good manners and owners who are willing and able to volunteer. For more on doing therapy with your Dane, see An introduction to Danes as Therapy dogs by J P Yousha, Therapy Dogs International, Delta Society Therapy Animals and Therapy Dogs, Inc.

**Assistance Dogs** - are dogs specifically trained to help out their special needs owner. There are Great Danes that have been trained to work with the wheel-chair bound as well as with Parkinson's and other special needs individuals.

**P.S. — Did you know that we have one of our GDCC members who is actively training her Dane to Dock-Drive??!! Give a High-five to Janet Lampe & Pickles!**



# New Champion



*The Magnificent  
"Miss Mae"*

**CH. Dundane's  
Goes West**

Many Thanks to Handlers:

Mort Evans

Betty Joe Costantinidis

Many Thanks to Judges:

Mari Hayhurst

Dana Cline

Jay Richardson

Ms. Denise Dean

Lowell Davis



**Owned By: Robert "Bobby" Payne and Norri Hennagin**

**Presented By: Dundane's West and Red Sky Danes**

*Watch for the next collaboration !!!!*

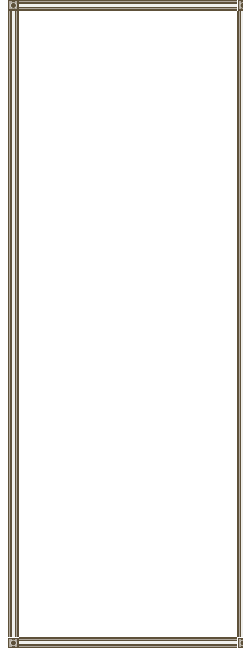


GDCC  
Mindy Donovan-Tandy  
5676 Francis Avenue  
Chino, CA 91710



***GDCC Members –  
Don't Forget!***

- *Submit Your Club Awards!*
- *Nominate Your 2013 Match Judge!*
- *Plan on attending the Closed Membership Meeting on 11/7/12 at the Hamlet!*



***Dog Days of Summer***  
*Photo Submitted By Doug Gillson*